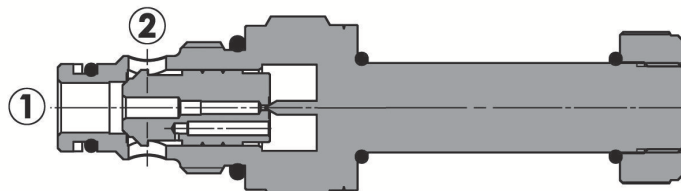
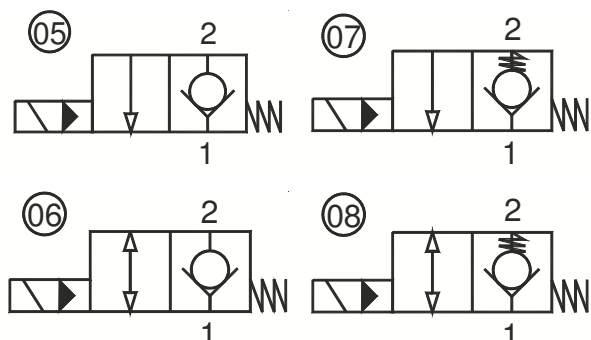


Valvola elettrica 2 vie, pilotata, normalmente chiusa
2 way, pilot operated electric valve, normally closed

Rev.02-2016/08



SPECIFICHE TECNICHE

Materiali: cartuccia in acciaio zincato. Componenti interni in acciaio trattato termicamente.
Campo di portata:
 S08: 0.5-50 L/min; S10: 2-70 L/min; S12: 4-140 L/min; S16: 4-150 L/min
Pressione max.: 350 bar
Coppia di serraggio in cavità: vedere pag.2
Cavità: vedere sezione X
Peso cartuccia: vedere pagina 2
Bobine: versione C-13, vedere sezione Y
Temperatura olio: -20°C + 80°C
Temperatura ambiente: -30°C + 60°C
Filtrazione consigliata: nominale max. 10µ, ISO 4406-19/17/14 (NAS8) o minore
 La variazione di voltaggio in ingresso non deve eccedere il ±10% del valore nominale.

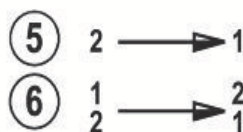
TECHNICAL SPECIFICATIONS

Materials: cartridge in steel zinc plated, internal parts in hardened steel.
Flow range:
 S08: 0.5-50 L/min; S10: 2-70 L/min; S12: 4-140 L/min; S16: 4-150 L/min
Max. pressure: 350 bar
Installation torque: see page 2
Cavity: see section X
Cartridge weight: see page 2
Coils: version C-13, see section Y
Oil temperature: -20°C + 80°C
Ambient temperature range: -30°C + 60°C
Recommended filtration: nominal max. 10µ, ISO 4406-19/17/14 (NAS8) or less.
 Inlet voltage fluctuations must not exceed ±10% of nominal voltage.

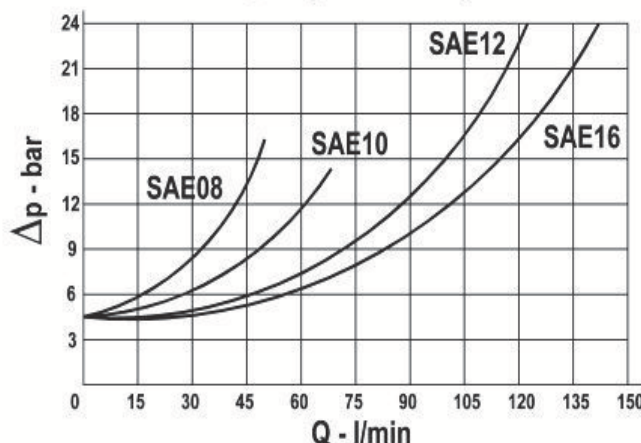
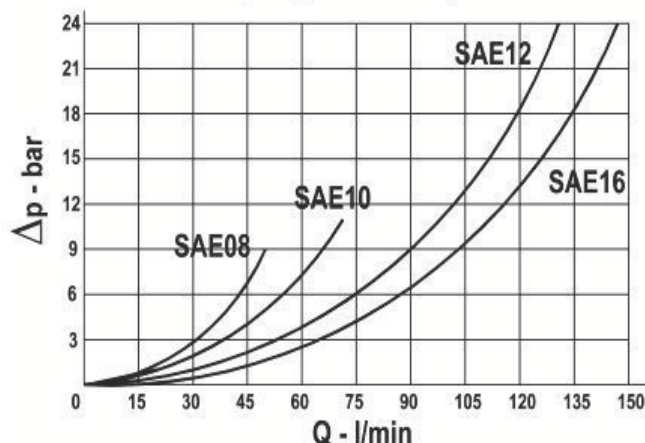
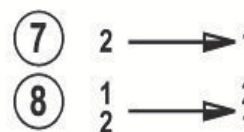
DIAGRAMMA PERDITE DI CARICO - PRESSURE DROP CURVES

Viscosità olio 24 mm²/sec. (3,5 °E)
 Temperatura 50 °C

Oil viscosity 24 mm²/sec. (3,5 °E)
 Temperature 50 °C

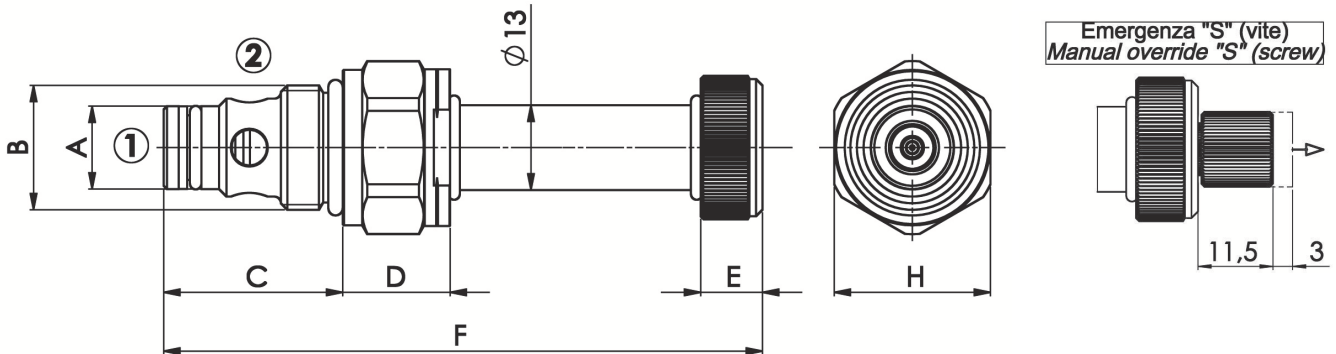


Valvola aperta (bobina eccitata)
 Valve open (energized coil)



Valvola elettrica 2 vie, pilotata, normalmente chiusa
2 way, pilot operated electric valve, normally closed

Rev.03-2016/08



TIPO TYPE	A	B	C	D	E	F	H	CAVITA' CAVITY	COPPIA DI SERRAGGIO INSTALLATION TORQUE	PESO WEIGHT
	mm	SAE	mm	mm	mm	mm	mm			
FP-22-CP-S08-05/06	12.7	3/4"-16 UNF	27.5	16.5	9.5	92	24	23081	35 – 45	0.135
FP-22-CP-S08-05/06-S	12.7	3/4"-16 UNF	27.5	16.5	9.5	92	24	23081	35 – 45	0.145
FP-22-CP-S08-07/08	12.7	3/4"-16 UNF	27.5	16.5	9.5	92	24	23081	35 – 45	0.135
FP-22-CP-S08-07/08-S	12.7	3/4"-16 UNF	27.5	16.5	9.5	92	24	23081	35 – 45	0.145
FP-22-CP-S10-05/06	15.87	7/8"-14 UNF	32	17	9.5	97	27	23101	45 – 55	0.170
FP-22-CP-S10-05/06-S	15.87	7/8"-14 UNF	32	17	9.5	97	27	23101	45 – 55	0.180
FP-22-CP-S10-07/08	15.87	7/8"-14 UNF	32	17	9.5	97	27	23101	45 – 55	0.170
FP-22-CP-S10-07/08-S	15.87	7/8"-14 UNF	32	17	9.5	97	27	23101	45 – 55	0.180
FP-22-CP-S12-05/06	22.22	1 1/16"-12 UN	46	18	9.5	112	32	23121	55 – 65	0.270
FP-22-CP-S12-05/06-S	22.22	1 1/16"-12 UN	46	18	9.5	112	32	23121	55 – 65	0.280
FP-22-CP-S12-07/08	22.22	1 1/16"-12 UN	46	18	9.5	112	32	23121	55 – 65	0.270
FP-22-CP-S12-07/08-S	22.22	1 1/16"-12 UN	46	18	9.5	112	32	23121	55 – 65	0.280
FP-22-CP-S16-05/06	28.56	1 5/16"-12 UN	46.5	16.5	9.5	111	40	23161	80 – 90	0.380
FP-22-CP-S16-05/06-S	28.56	1 5/16"-12 UN	46.5	16.5	9.5	111	40	23161	80 – 90	0.380
FP-22-CP-S16-07/08	28.56	1 5/16"-12 UN	46.5	16.5	9.5	111	40	23161	80 – 90	0.380
FP-22-CP-S16-07/08-S	28.56	1 5/16"-12 UN	46.5	16.5	9.5	111	40	23161	80 – 90	0.380

Per i corpi in cavità SAE a 2 vie, vedere pagina catalogo generale W 150/1
 For 2 way SAE cavity bodies, see page W 150/1 in technical catalogue

ESEMPIO DI ORDINAZIONE - ORDERING CODE EXAMPLE

FP 22 CP S08 05 * *

* S08 – 3/4"-16 UNF
 S10 – 7/8"-14 UNF
 S12 – 1 1/16"-12 UN
 S16 – 1 5/16"-12 UN
 Dimensione - Dimension

05 – normalmente chiusa, unidirezionale – normally closed, unidirectional
 06 – normalmente chiusa, bidirezionale – normally closed, bidirectional
 * 07 – normalmente chiusa, unidirezionale, extra-molla – normally closed, unidirectional, extra spring
 08 – normalmente chiusa, bidirezionale, extra-molla – normally closed, bidirectional, extra spring
 Schema idraulico – Hydraulic scheme

Guarnizioni – Seals:
 V=Viton *
 Omettere se BUNA-N – Omit if BUNA-N
 Emergenza – Manual override
 S = vite - screw *
 Omettere se non richiesta – Omit if not required